

# Hutchinson Marine Propulsion Sealing Solutions

STERN TUBE SEALS FOR MILITARY AND COMMERCIAL APPLICATIONS

## Engineered for Performance, Reliability, and Longevity

Hutchinson Stern Tube Seal Systems are designed to meet the most demanding standards in marine propulsion.

Utilizing advanced face sealing materials, these systems deliver exceptional service life, minimize dry dock maintenance intervals, and provide the safety and reliability required by today's operators.



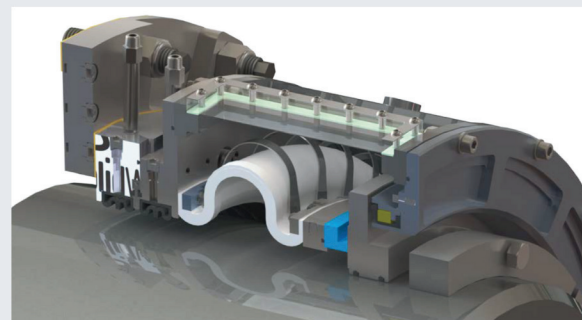
## How It Works: Advanced Mechanical Face Seal Technology

Each seal consists of two precision-engineered faces, one stationary, one rotating. As the shaft turns, hydrodynamic lift occurs, forming a microscopic film of fluid between the surfaces.

This film creates a liquid-tight barrier while maintaining low friction, allowing the seal to:

- Operate for long intervals without repair or replacement
- Minimize wear and energy loss
- Extend operational life at higher speeds

**The result:** near-zero friction performance with reliable fluid sealing boundaries that reduce maintenance costs and extend uptime.



## Unmatched Advantages



### ✓ Improved Reliability

Ruggedized materials withstand corrosion, shock, and vibration, ensuring performance in harsh marine environments.

### ✓ Increased Safety

Redundant safety systems keep vessels operating through casualty events, preventing mission interruption.

### ✓ Easier Maintenance

Fully split components and large access ports simplify inspection and overhaul. Maintenance can be performed without dry docking or shaft removal, reducing downtime and cost.

# Hutchinson Marine Propulsion Sealing Solutions

STERN TUBE SEALS FOR MILITARY AND COMMERCIAL APPLICATIONS

## MILITARY GRADE - SQ300 SERIES

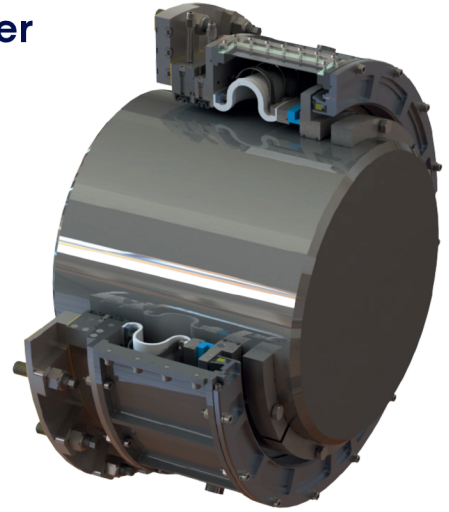
### Shock and Vibration Qualified - Built for the Warfighter

Designed specifically for military vessels, the SQ300 Series incorporates advanced safety and reliability features to keep critical operations moving forward.

#### Key Features

- Dual Inflatable Static Sealing
- Automatically Engaging Dynamic Backup
- Auto-Pressure Balancing Face Seal
- Raw-Water Cooled System

Available Sizes: Shaft diameters from 100mm to 1,000mm+



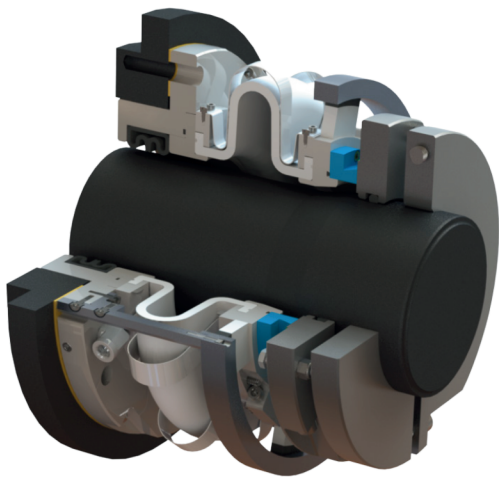
## COMMERCIAL GRADE - CG400 SERIES

### Reliable Performance for Commercial Marine Applications

Using the same advanced sealing materials as the SQ300 Series, the CG400 Series offers unmatched durability and performance for a wide range of vessel types.

#### Key Features

- Raw-Water Cooled
- Fully Customizable
- Advanced Face Seal Materials



## Tested and Proven - Performance You Can Trust

From laboratory material science studies to full-scale shock and sea trial testing, Hutchinson Stern Tube Seals are validated for performance, safety, and endurance.

Built to operate longer, at higher speeds, and with less maintenance to keep your mission on course.